

ENGINEERING HERITAGE RECOGNITION PROGRAM

Proposal to Nominate

White Bay Power Station

as an Item of Engineering Heritage Interest

Item Name:	White Bay Power Station		
Other/Former Names:	NA		
Locality:	White Bay, Sydney		
Address:	Victoria road, Rozelle NSW and/or 26 Robert Street, Rozelle NSW.		
Co-ordinates	Lat: -33.86684 Lon: 151.17635 https://maps.app.goo.gl/WsjQBVLK7Sj7Mx4A		
Current Owner:	Place Management NSW		
Original Owner:	NSW Department of Railways, Railways Commissioners Department		
Current use:	Undergoing remediation works and conservation, and repurposing for cultural and community use, whilst maintaining its heritage integrity.		
Former use:	Generation of power for tram system and later train network.		
Proposed use:	Cultural and community use.		
Item Condition:	Derelict		
Designer:	NSW Department of Railways, Railways Commissioners Department		
Builder:	NSW Department of Railways, Railways Commissioners Department		
Started:	1917	Initial completion: Final works completed: Decommissioned	1917 1948 1983
History:	<p>Construction of the White Bay Power Station was begun by the New South Wales Government Railways in 1912 to satisfy the power requirements for the expansion of the Sydney tram system, and later the rail network.</p> <p>The plant was fully operational from 1917 with two further phases of development occurring between the years 1923–1928 and 1945–1948, which further increased the station’s electricity output. It supplied power to the electricity grid after 1958.</p> <p>The power station remained under the control of the department until 1953 when the newly created Electricity Commission of NSW took over, and it remained in service until 1984, when it was decommissioned.</p> <p>Ownership of the station moved to Pacific Power when NSW electricity was deregulated in 1995. In 2000, the NSW government transferred the 4 ha site from Pacific Power to the Sydney Harbour Foreshore Authority (now Place Management NSW).</p> <p>The government confirmed that the White Bay Power Station would be retained for cultural and creative purposes as part of the Bays West Place Strategy and precinct planning.</p> <p>White Bay Power Station has been zoned for predominantly cultural and</p>		

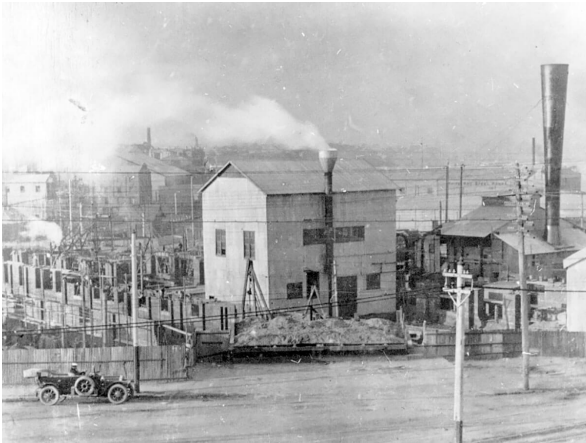
ENGINEERING HERITAGE RECOGNITION PROGRAM

	<p>community use. At the time of writing, 'The vision is for White Bay Power Station to be a multi-purpose cultural facility suitable for a range of cultural, artistic and commercial functions, including First Nations programming'.</p> <p>Remediation works started in 2021.</p>
Description:	<p>The White Bay Power Station site is 38,000 square metres, and the complex is composed of the following principal elements:</p> <ul style="list-style-type: none"> • Two Steel Stacks. The stacks are made of plate welded steel with guy wires and vibration dampeners at top and base. Only the northern most stack remains; the other having been demolished. • A Coal Handling Unit serviced by a spur rail line. It consists of a rail truck dumping shed adjacent to the stacks and a conveyor belt covered way. • Turbine Hall Building incorporating Administrative Offices, the old Laboratory and a Workshop. It is a massive, rendered brick and reinforced concrete building. • Boiler House - a massive brick and reinforced concrete structure. • A Switch House and Substation. The architecture of the switch house is similar to the turbine hall with its massive steel framed windows and plastered rendered facade. <p>Ancillary structures include coal loading wharf and coal handling system, the watch house, the oil reservoir and an amenities block.</p> <p>The site complex is a rare example of a complete system representing early power generation in Australia. The architecture involves a rare use of the Arts and Crafts design in an industrial complex.</p> <p><i>(For a full description of the elements, refer to State Heritage Register SHR ID H01015).</i></p>
Significance:	<p>White Bay Power Station was the longest serving Sydney power station and is the only one to retain a representative set of machinery and items associated with the generation of electricity in the early and mid-twentieth century; they are of exceptional technical significance with research potential to yield information not available from any other source.</p> <p>It retains within its fabric, and in the body of associated pictorial, written archives and reports, and oral history recordings, evidence for the development of technology and work practices for the generation of electrical power from coal and water. This development of power generation at White Bay contributed to the expansion of the economy of Sydney and New South Wales.</p> <p>It retains the unique ability to demonstrate, by its location, massing, design, machinery and associated archives, the influence and dominance that early power-generating technology exerted on the lives and urban fabric of inner cities in the first half of the 20th century.</p> <p>Aesthetically, White Bay Power Station contains internal and external spaces of exceptional significance which are becoming increasingly rare. These spaces include raw industrial spaces of a scale, quality and configuration and inspire visitors and users alike.</p> <p>White Bay Power Station has strong and special associations and meanings for the local community, for former power station workers and for others who have used the site; it is of high social significance.</p> <p>It is the only coal based industrial structure, dependent on a waterside</p>

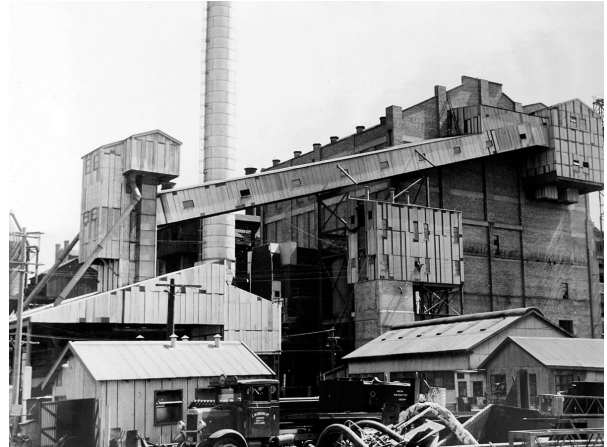
ENGINEERING HERITAGE RECOGNITION PROGRAM

	<p>location to survive adjacent to the harbour in the Sydney Region.</p> <p>It is of exceptional structural significance to the State of New South Wales.</p>		
Webpage Summary:	<p>Construction of the White Bay Power Station was begun by the New South Wales Government Railways in 1912 to satisfy the power requirements for the expansion of the Sydney tram system, and later the rail network. The plant was fully operational from 1917.</p> <p>The station was expanded in a number of phases until 1948; it supplied power to the electricity grid after 1958. In 1984 the station was decommissioned and became derelict.</p> <p>White Bay Power Station was the longest serving Sydney power station and is the only one to retain a representative set of machinery and items associated with the generation of electricity in the early and mid-twentieth century.</p> <p>It retains within its fabric, and in the body of associated pictorial, written archives and reports, and oral history recordings, evidence for the development of technology and work practices for the generation of electrical power from coal and water. This development of power generation at White Bay contributed to the expansion of the economy of Sydney and New South Wales.</p> <p>The government confirmed that the White Bay Power Station would be retained for cultural and creative purposes as part of the Bays West Place Strategy and precinct planning; remediation works started in 2021.</p>		
Engineering Theme:	Electricity, Generation, Coal		
Heritage Listing:	NSW State Heritage Register, SHR ID: H01015.		
References/Sources:	<p>This nomination quotes heavily from the following sources:</p> <ul style="list-style-type: none"> • NSW State Heritage Register, SHR ID: H01015. • NSW Government website: White Bay Power Station, https://www.planning.nsw.gov.au/plans-for-your-area/state-significant-precincts/the-bays/bays-west/white-bay-power-station 		
Nominated by:	Michael Clarke		
Contact Ph. & Email:	0412 887 001	nardiclarke@gmail.com	
EHA Branch:	Sydney	Nomination Date:	4 February 2024

ENGINEERING HERITAGE RECOGNITION PROGRAM



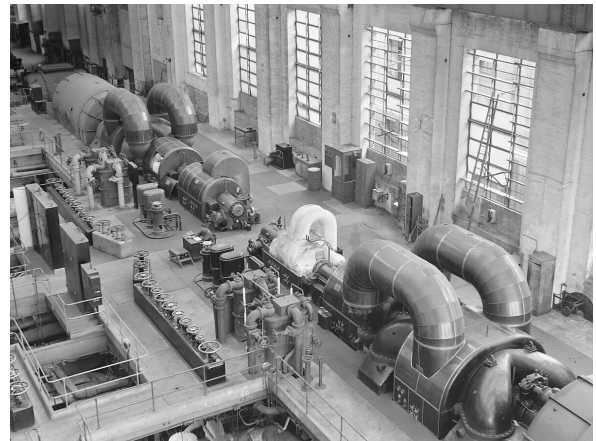
White Bay Power Station, first day of operation, 3 July 1913 *Railway Department archive, 0363-004. NSW State Archives*



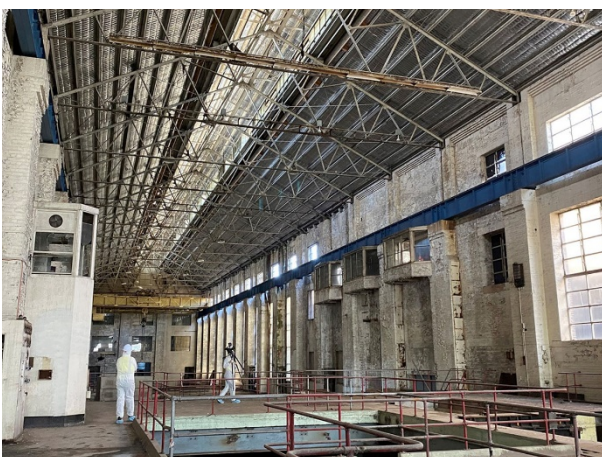
White Bay Power Station. Boiler house, chimney, coal conveyor & ash plant, 1954. *Electricity Commission archive. NSW State Archives*



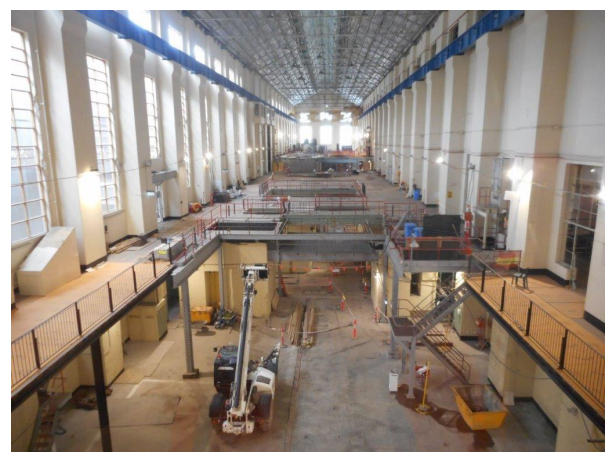
White Bay Power Station. Turbine Hall, 1925. *Railway Department archive, 0363-083. NSW State Archives*



White Bay Power Station. Nos.1 & 2 Parsons turbines, 1956. *Electricity Commission archive, 00937. NSW State Archives*

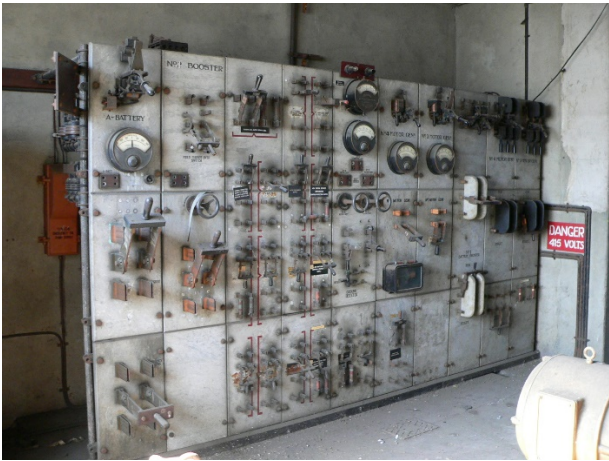


White Bay Power Station. Turbine Hall, 2021. *Place Management NSW*



White Bay Power Station. Turbine Hall.

ENGINEERING HERITAGE RECOGNITION PROGRAM



White Bay Power Station. Switch board, 2006.
Michael Clarke



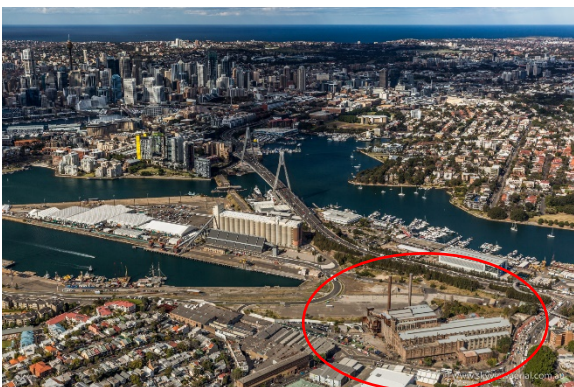
White Bay Power Station. Meter board, 2006.
Michael Clarke



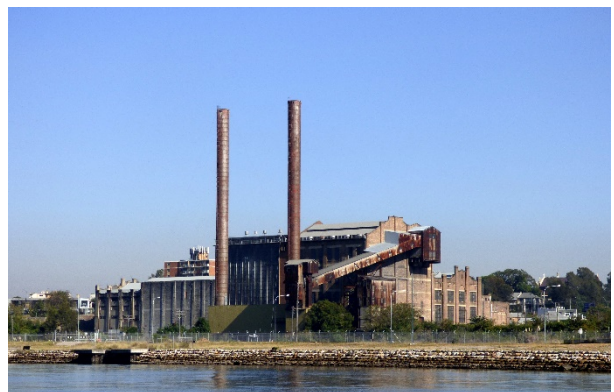
White Bay Power Station. The newly completed Control Room, 1949. *Electricity Commission archive. NSW State Archives*



White Bay Power Station. Control Room, 2006.
Michael Clarke



White Bay Power Station and city.



White Bay Power Station from White Bay,
C.2020.
Michael Clarke